

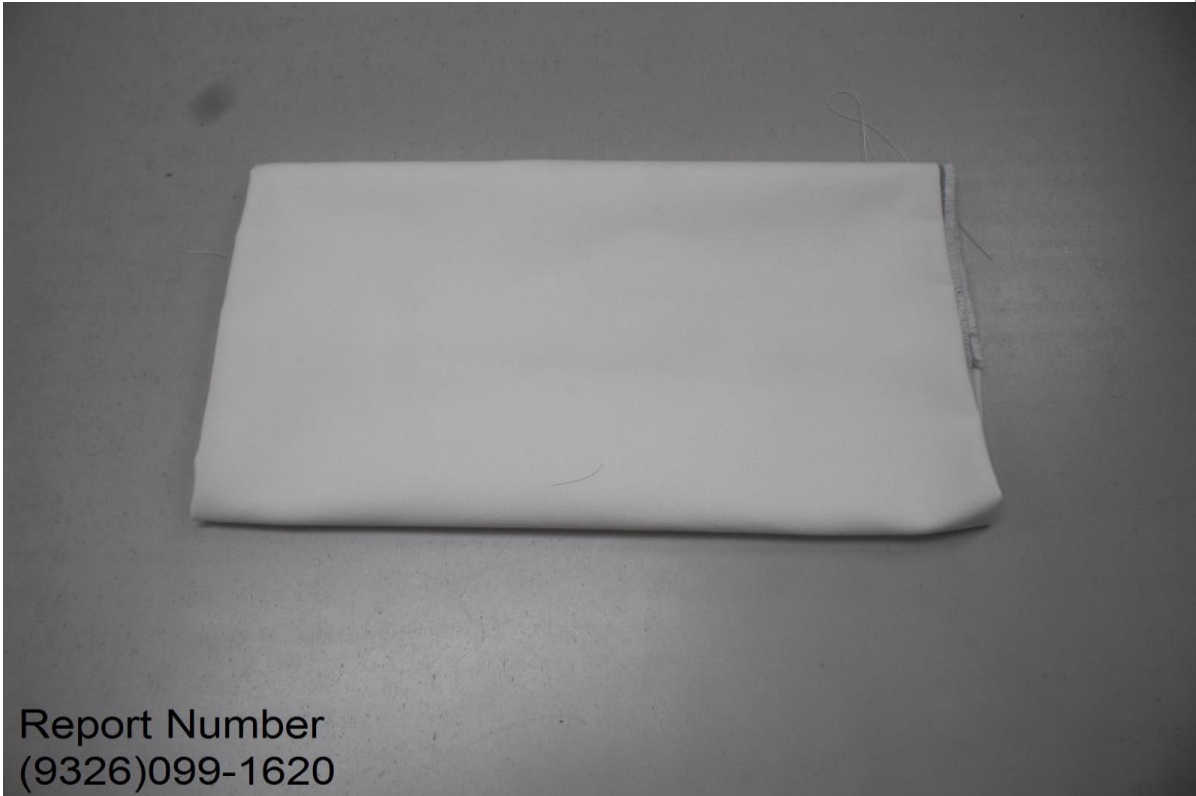


**BUREAU  
VERITAS**

# TEST REPORT

Technical Report: (9326)099-1620

Page 1 of 4  
April 20, 2026



Report Number  
(9326)099-1620



**BUREAU  
VERITAS**

# TEST REPORT

**TO : MOSAROMA INT'L CO LTD  
7/F., BLISSFUL BUILDING  
243-247 DES VOEUX ROAD CENTRAL  
HONG KONG ISLAND,  
HONG KONG**

**LAB NO.:** (9326)099-1620  
**FORM NO.:** /  
**DATE IN:** Apr 09, 2026  
**DATE OUT:** Apr 20, 2026  
**NO. OF WORKING DAYS:** /  
**PAGE 2 OF 4**

**ATTN : LEO**

<b>OVERALL RATING</b>	
<b>PASS</b>	_____
<b>FAIL</b>	_____
<b>DATA</b>	_____ <b>X</b> _____

<b>Vendor:</b>	/	<b>Agent:</b>	/
<b>Fabric Supplier/Mill:</b>	/	<b>Factory/Manufacturer:</b>	/
<b>P.O. No.:</b>	/	<b>Style No.:</b>	15234117
<b>Sample Description:</b>	100% SOLUTION-DYED POLYESTER	<b>Style Description:</b>	/
<b>Color:</b>	WHITE	<b>Country of Origin:</b>	/
<b>Claimed Fabric Weight:</b>	/	<b>Claimed Fabric Count:</b>	/
<b>Yarn Size:</b>	/	<b>Submitted Size:</b>	/
<b>Size Range:</b>	/	<b>FPU No.:</b>	/
<b>GPU No.:</b>	/	<b>End Use:</b>	OUTDOOR CUSHION/PILLOW/UP HOLSTERY
<b>SKU:</b>	/	<b>Age Group:</b>	/

<b>Product Category</b>	FABRIC
<b>Test Requested</b>	SEE TEST PROPERTY
<b>Previous Report No.</b>	/

<b>Submitted Fiber Content</b>	100% SOLUTION-DYED POLYESTER
<b>Actual Fiber Content</b>	/
<b>Suggested Fiber Content</b>	/
<b>Submitted Care Instruction(s)</b>	/
<b>Client Expected Care Instruction</b>	/
<b>Suggested Care Instruction(s)</b>	/



**BUREAU  
VERITAS**

TEST PROPERTY	PASS	FAIL	DATA	COMMENTS
ABRASION RESISTANCE OF FABRICS BY MARTINDALE METHOD: SPECIMEN BREAKDOWN			X	SEE RESULT

**TECHNICAL  
QUESTIONS** (86)20-22902088  
bvcps\_pyinfo@cn.bureauveritas.com

**GENERAL  
INFORMATION** (86)20-22902088  
bvcps\_pyinfo@cn.bureauveritas.com

**SIGNATURES** Bureau Veritas Consumer Products Services  
(Guangzhou) Co., Ltd

Quan Peng  
Operation Manager



**BUREAU  
VERITAS**

<u>TEST PROPERTY</u>	<u>TEST RESULTS</u>	<u>REQUIREMENTS</u>
<b><u>ABRASION RESISTANCE OF FABRICS BY MARTINDALE METHOD: SPECIMEN BREAKDOWN</u></b> (ISO 12947-2:2016 / BS EN ISO 12947-2:2016/ DIN EN ISO 12947-2:2017 / NF EN ISO 12947-2:2017, PRESSURE USED: 12 KPA)		
LOWEST INDIVIDUAL TEST RESULT (RUBS)	> 80000.0	/

END OF REPORT